

Hampshire Water Transfer and Water Recycling Project

Environmental Statement – Figure 4.2 Preferred pipeline corridor selected at Stage 3

VOLUME NUMBER: 6

PLANNING INSPECTORATE SCHEME NUMBER: WA010002

APPLICATION DOCUMENT REFERENCE: 6.3

APFP REGULATION: 5(2)(a)

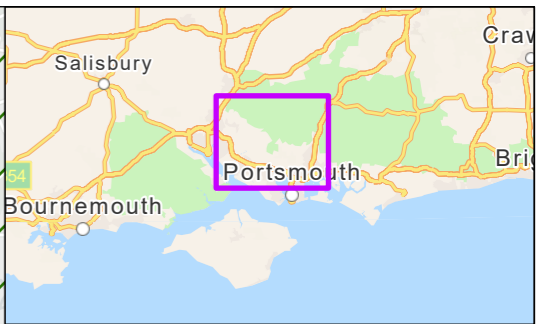
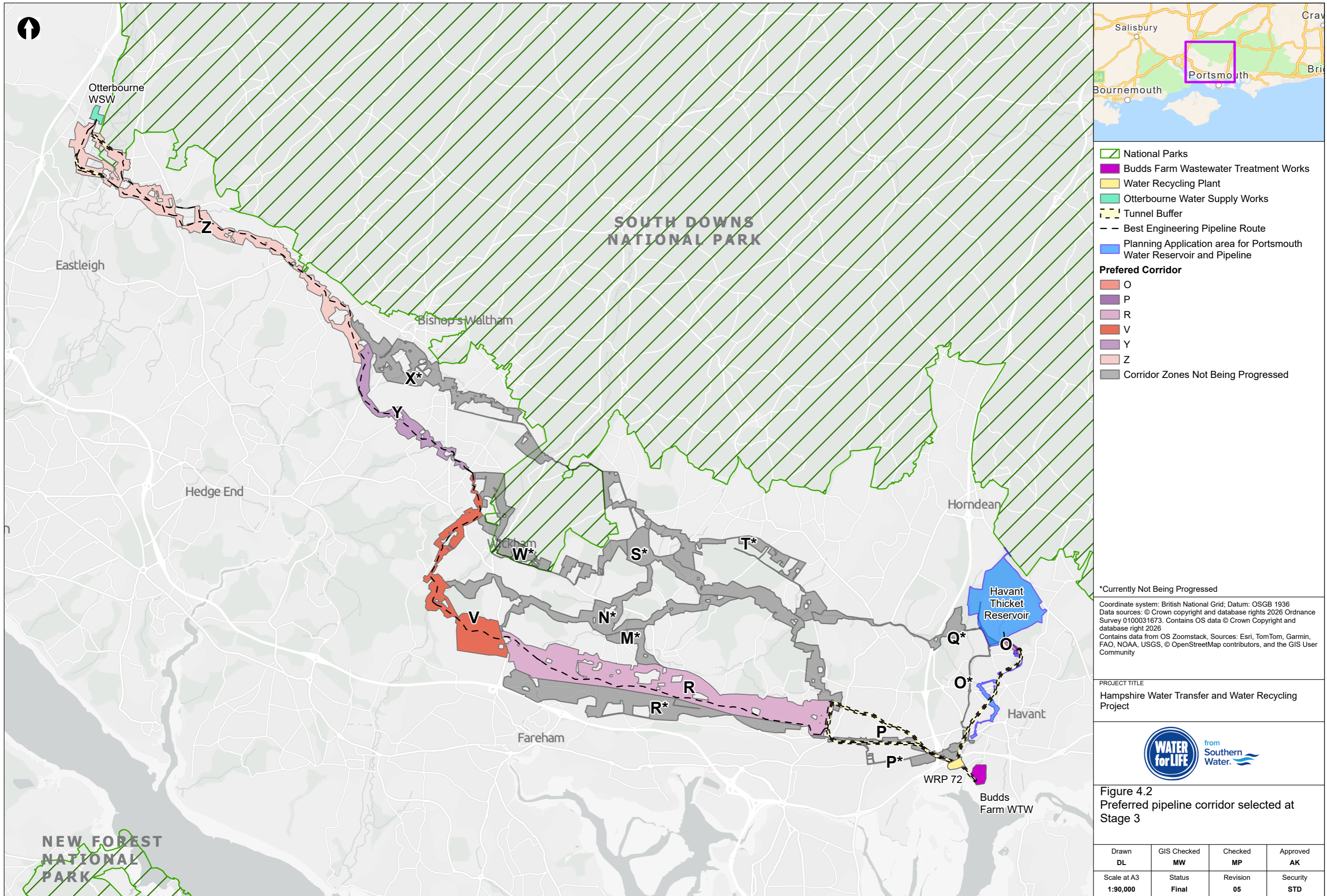
May 2026

Version 0



from
**Southern
Water.** 

The Southern Water logo consists of three stylized, wavy blue lines of varying lengths, positioned to the right of the text 'Southern Water'.



- National Parks
 - Budds Farm Wastewater Treatment Works
 - Water Recycling Plant
 - Otterbourne Water Supply Works
 - Tunnel Buffer
 - Best Engineering Pipeline Route
 - Planning Application area for Portsmouth Water Reservoir and Pipeline
- Preferred Corridor**
- O
 - P
 - R
 - V
 - Y
 - Z
 - Corridor Zones Not Being Progressed

*Currently Not Being Progressed

Coordinate system: British National Grid; Datum: OSGB 1936
 Data sources: © Crown copyright and database rights 2026 Ordnance Survey 0100031673. Contains OS data © Crown Copyright and database right 2026
 Contains data from OS Zoomstack, Sources: Esri, TomTom, Garmin, FAO, NOAA, USGS, © OpenStreetMap contributors, and the GIS User Community

PROJECT TITLE
 Hampshire Water Transfer and Water Recycling Project



Figure 4.2
 Preferred pipeline corridor selected at Stage 3

Drawn DL	GIS Checked MW	Checked MP	Approved AK
Scale at A3 1:90,000	Status Final	Revision 05	Security STD

Drawing Number
PC5223-RHD-ES-ZZ-D-Z-0108

